





## 1Guard Modular Safety

The 1Guard modular safety system is an affordable way to protect you and your employees in the workplace from hazardous machinery and equipment. Our modular guarding is totally customisable and can be easily modified at any time as it is constructed from our SlotPro aluminium T-slot extrusion and uses our SlotPro components.

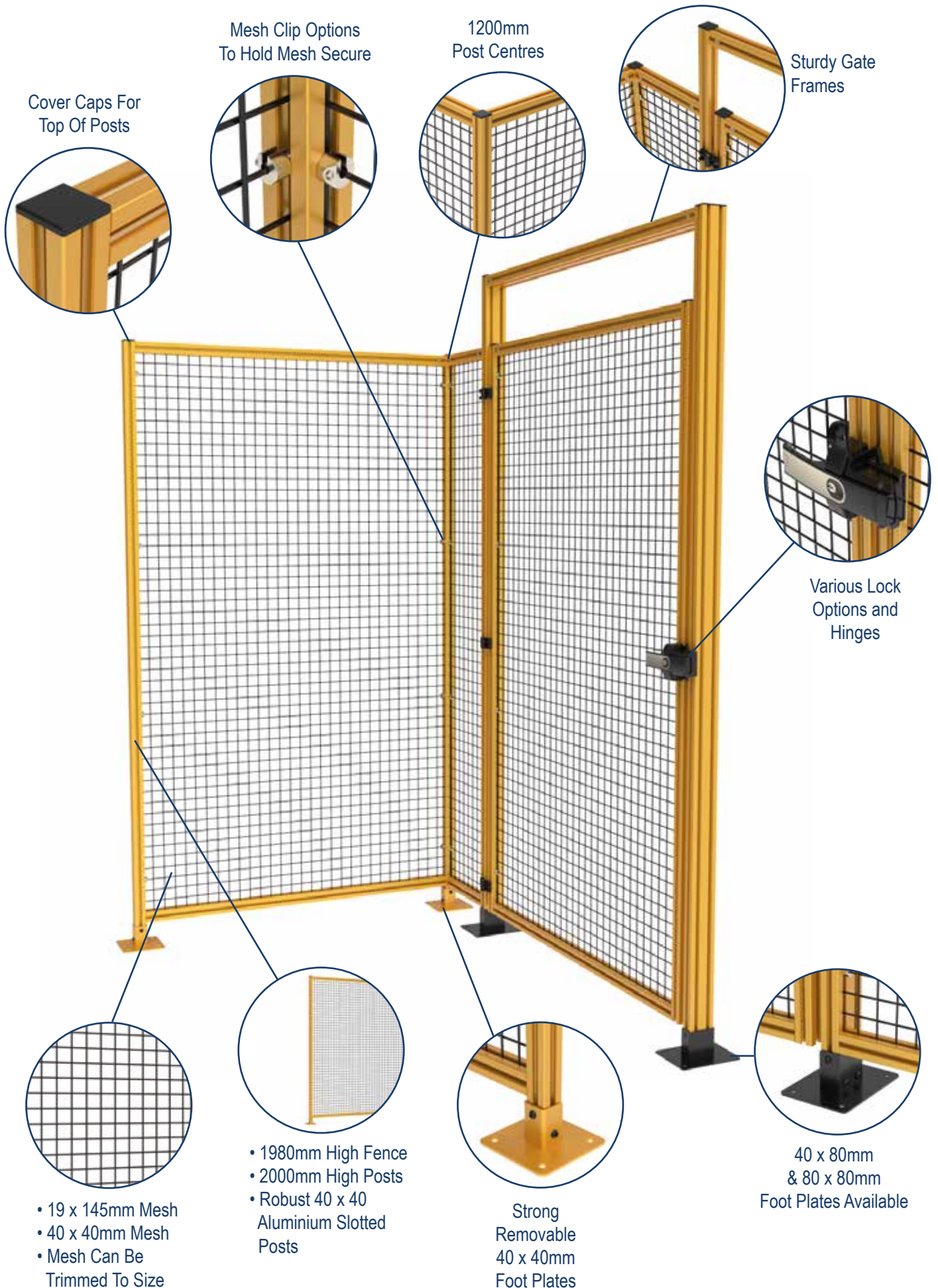
Assembled from strong, robust 40×40 aluminium slotted posts, foot plates, electrogalvanised mesh and other key SlotPro components. Our systems are extremely fast to assemble and install making it ideal for custom safety applications. We can design a custom guarding system to suit your requirements and send to you as a kit set, ready to assemble on your site with just a 5mm hex key!

### Key Features of 1Guard:

- Fully modular systems make additions and changes quick, easy and cost effective with a weld-free assembly installation.
- Guarding can be disassembled and relocated or reconfigured to suit your changing needs at any time because of its modular construction.
- Hinged, sliding and cantilevered gate options.
- Doors, interlocks and area sensors are available as part of a full safety system.
- Choice of mesh, polycarbonate, perforated sheet and solid panels.
- Mesh is electrogalvanised prior to powder coating for additional corrosion resistance in harsh environments.
- Panels sizes are fully customisable to your requirements as mesh can be easily trimmed to size.
- Our system is the #1 modular safety guarding system and designed to comply with the AS4024.1 Standard.



# 1Guard Modular Safety Features



Mesh Clip Options  
To Hold Mesh Secure

1200mm  
Post Centres

Sturdy Gate  
Frames

Cover Caps For  
Top Of Posts

Various Lock  
Options and  
Hinges

- 19 x 145mm Mesh
- 40 x 40mm Mesh
- Mesh Can Be Trimmed To Size

- 1980mm High Fence
- 2000mm High Posts
- Robust 40 x 40 Aluminium Slotted Posts

Strong  
Removable  
40 x 40mm  
Foot Plates

40 x 80mm  
& 80 x 80mm  
Foot Plates Available

## SAFETY POSTS & FEET

40 x 40 SlotPro Profile,  
Safety Post  
Powder Coated Yellow



Code: 1.0404.4.SPSSPC

40 x 80 SlotPro Profile,  
Safety Post  
Powder Coated Yellow



Code: 1.0408.6.SPRSPC

80 x 80 SlotPro Profile,  
Safety Post  
Powder Coated Yellow



Code: 1.0808.8.SPSSPC

1Guard Safety Post  
2000mm,  
Powder Coated Yellow



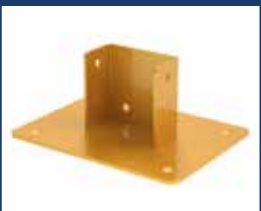
Code: 1G.0404.4.SP

150 x 150 Foot Plate,  
Includes Fittings,  
Powder Coated Yellow



Code: 1G.1515.FPY.F

150 x 200 Foot Plate,  
Includes Fittings,  
Powder Coated Yellow



Code: 1G.1520.FPY.F

200 x 200 Foot Plate,  
Includes Fittings,  
Powder Coated Yellow

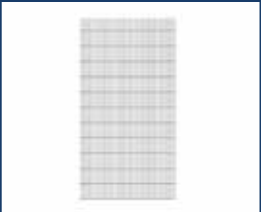


Code: 1G.2020.FPY.F



## SAFETY MESH OPTIONS & MATCHING CLIPS

19 x 145mm Aperture  
Black Powder Coated  
Mesh



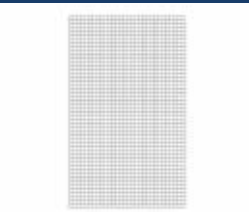
Code: 1G.1945.MPC

19 x 145mm  
Single Mesh Clip  
Includes Fittings



Code: 1G.0102.MC

40 x 40mm Aperture  
Black Powder Coated  
Mesh



Code: 7.04.1912.GGWM

40 x 40mm  
Single Mesh Clip  
Includes Fittings



Code: 6.04.01.GGWC

For more information  
on our wide range  
of products

Call 0800 00 28 32

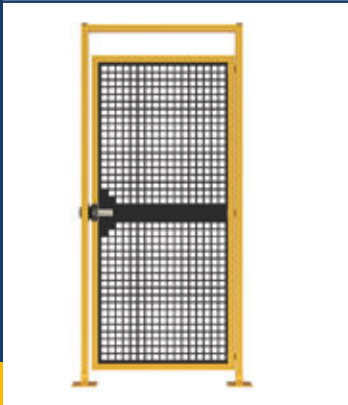
or visit our website  
[www.slotpro.nz](http://www.slotpro.nz)

## SAFETY GATES

### 1Guard Pressed Panel Safety Gate

- 2 x 40 x 80 Posts
- Top Lintel
- Hinges
- Black Pressed Panel
- Handles
- Magnetic Latch

Code: 1GPPGATE



### 1Guard 40 x 40 Mesh Safety Gate

- 2 x 40 x 80 Posts
- Top Lintel
- 40 x 40mm or 19 x 145mm Aperture Mesh Option
- Hinges
- Handles
- Magnetic Latch

Code: 1G4040GATE



## ANGLE BRACKETS & CONNECTORS

4 Series Angle bracket  
for 40mm Extrusion  
- Die Cast Zinc



Code: 6.04.SPB40

4 Series Angle Bracket  
38mm x 76mm  
- for 40mm Extrusion



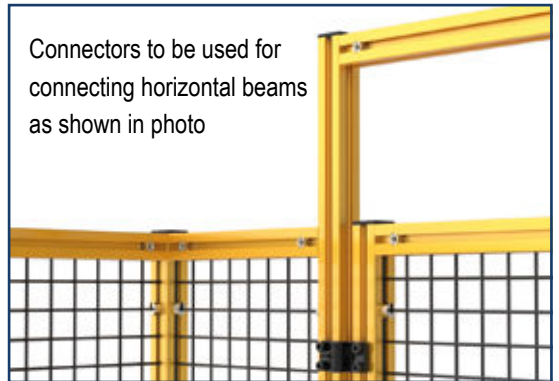
Code: 6.04.SPB48

4 Series SlotPro  
Universal Connector



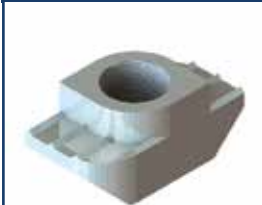
Code: 2.04.SPUC

Connectors to be used for  
connecting horizontal beams  
as shown in photo



## SLOT NUTS

4 Series  
Threaded T Nut M6



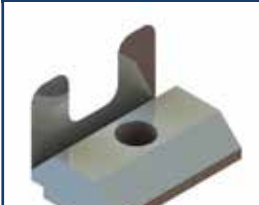
Code: 3.04.T.SP6

4 Series  
Threaded T Nut M8



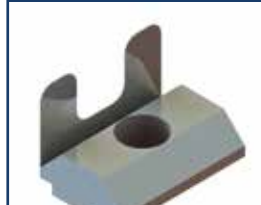
Code: 3.04.T.SP8

4 Series  
Roll in Slot Nut M6



Code: 3.04.R.SP6

4 Series  
Roll in Slot Nut M8



Code: 3.04.R.SP8

## HINGES

4 Series  
Slotted Hinge



Code: 4.04.SPSLH

## HINGES, HANDLES & LATCHES

4 Series Slotted Hinges  
with Locking Lever



Code: 4.04.SPSLHL

4 Series  
Magnetic Catch



Code: 4.04.SPMC

4 Series  
Ball Catch



Code: 4.04.SPBC

4 Series Handle,  
Black 152mm



Code: 4.04.SPBH

4 Series Machine  
Handle 135mm



Code: 4.04.SPMH

## COVER CAPS

4 Series  
Cover Cap 40 x 40



Code: 5.04.SP40

4 Series  
Cover Cap 40 x 80



Code: 5.04.SP80

4 Series  
Cover Cap 80 x 80



Code: 5.08.SP80



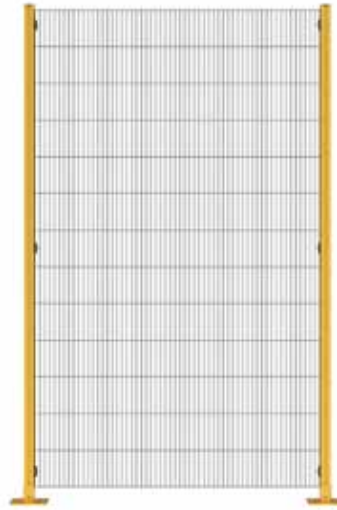
## 1GUARD 19 x 145 MESH PANELS

The full panel is the first panel you require and consists of the below components:

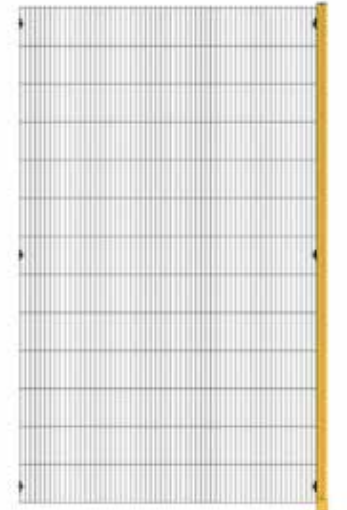
- 1 x 19 x 145 Aperture Black Powder-Coated Mesh Sheet
- 2 x Powder-Coated Safety Yellow Posts, 2000mm high
- 2 x 150 x 150 Foot Plates including fixings
- 8 x 1Guard 19 x 145 Mesh Clips including fixings
- 2 x 40 x 40 Cover Caps

The subsequent panel is any additional panels you require after the full panel.

A Standard Aperture Black Powder Coated Mesh Sheet is 2000mm x 1200mm, but can be trimmed to suit.



**1Guard 19 x 145  
Full Panel**



**1Guard 19 x 145  
Subsequent Panel**

## 1GUARD 40 x 40 MESH PANELS

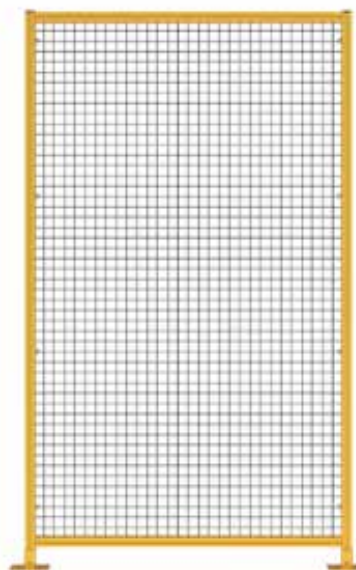
The full panel is the first panel you require and consists of the below.

- 1 x 40 x 40 Aperture Black Powder-Coated Mesh Sheet
- 2 x Powder-Coated Safety Yellow Posts, 2100mm high
- 2 x Powder-Coated Safety Yellow Posts, 1184mm long
- 2 x 150 x 150 Foot Plates including fixings
- 10 x 1Guard 40 x 40 Mesh Clips including fixings
- 2 x 40 x 40 Cover Caps

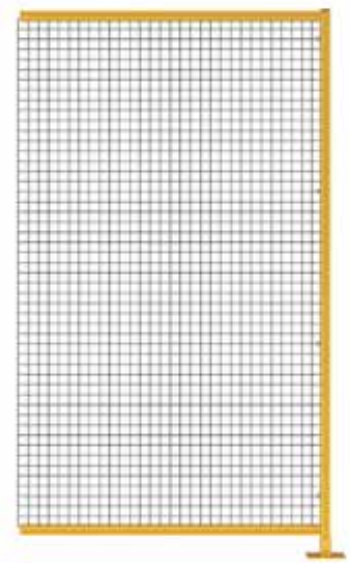
The subsequent panel is any additional panels you require after the full panel.

This is a fully enclosed guarding panel with horizontal rails top and bottom.

A Standard Aperture Black Powder Coated Mesh Sheet is 2000mm x 1200mm, but can be trimmed to suit.



**1Guard 40 x 40  
Full Panel**



**1Guard 40 x 40  
Subsequent Panel**

Our 1Guard Modular Safety Guarding System is used in many different applications and industries, primarily in workplaces for guarding hazardous machinery to keep employees protected and safe. With the 1Guard Modular Safety System being able to be customised and reconfigured at any time, there is sure to be a solution that meets all your safety requirements in the workplace.

Check out the pictures below to see different examples of the work we have done with 1Guard Modular Safety Guarding.

Contact us to discuss your safety guarding requirements and we can assist you through the process. Whether it be custom designing or providing a quote, the team at SlotPro are here to help!





[www.slotpro.nz](http://www.slotpro.nz) | 0800 00 28 32 | [sales@slotpro.nz](mailto:sales@slotpro.nz)